

OMNITECH RESOURCES INC.

Suite 1020, 10F, Green Net Building, No.96, Yunnan Road, Futian, Shenzhen, 518028, China.
Tel: 86-755-83745178 (4lines) Fax: 86-755-83745182, Email: omniqa@163.net

INSPECTION CERTIFICATE

Date: 07/08/09

Report No. 090711A

Customer:	XXX XX
------------------	--------

Supplier:	XXX XX
Address:	Ningbo City, Zhejiang Province
Contact:	Martin 0574-860xxx83

ORDER INFORMATION

Order No. (Conf. No.)	2009-123				
Description:	XXXX 25"x 9"XX LED open sign				
Lot Quantity:	3,000pcs				
Sample Quantity:	125pcs				
AQL Level(MIL-STD 105D,IIA)					
. Critical Deficiency		Accept	0pc	Reject	1pc
. Major Deficiency	1.0	Accept	3pcs	Reject	4pcs
. Minor Deficiency	4.0	Accept	10pcs	Reject	11pcs

INSPECTION RECORDS

Deficiency Observed	Critical	Major	Minor	Remarks
1) Appearance	0	0	3	3 x scratches on the surface of white polycarbonate tube
2) Material	0	0	3	3 x injection mold marks
3) Function	2	3	0	2 x malfunction of the printed circuit board, with hazardous concern; 3 x loose assembly of white polycarbonate tube on ABS plastic board.
4) Packing	0	0	0	
5) Shipping Mark	0	0	0	
6) Documentation	0	0	0	
7) Others	0	0	0	
TOTAL	2	3	6	

DISPOSITION

Accepted		Rejected	X	Rework	
-----------------	--	-----------------	---	---------------	--

REMARKS:

1) WE STATE THAT SHIPMENT IS REJECTED.
2) Inspected goods were packed into Ctn# 4,36,75,45,26,98,70,59,101,105,168,179,203,27,561,514,68,134,168,199,300,305,367,321,330.

Supplier Signature

On and Behalf of
OMNITECH RESOURCES INC.

Authorized Signature

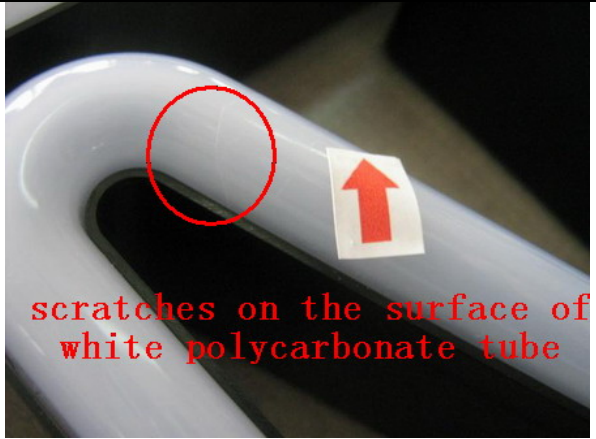
Authorized Signature

A. Appearance

Appearance/Normal



Defective

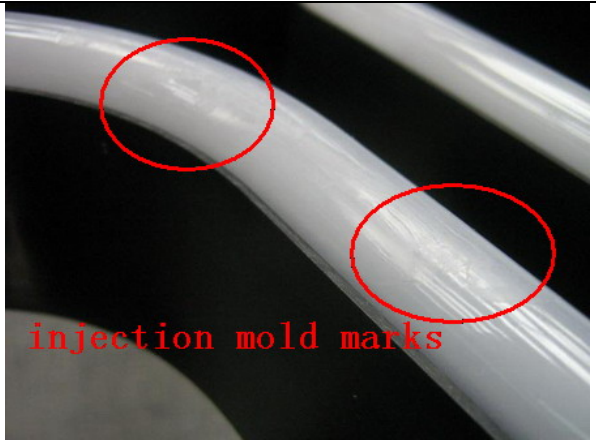


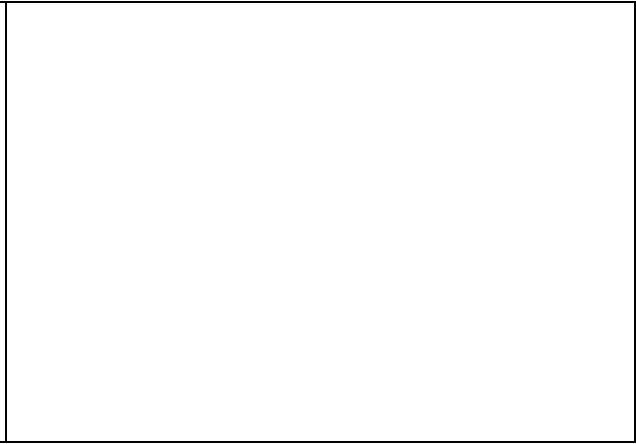
B. Material

Material/Normal



Defective



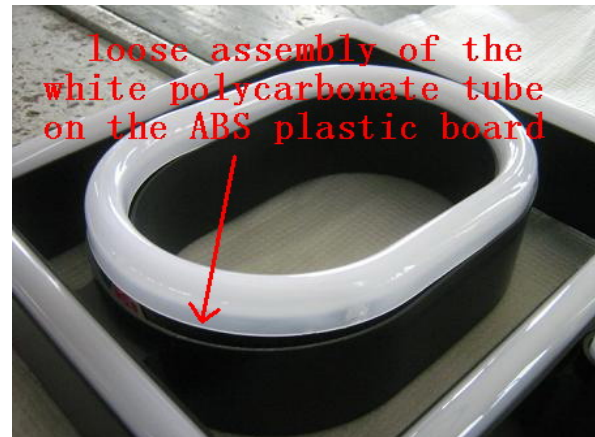
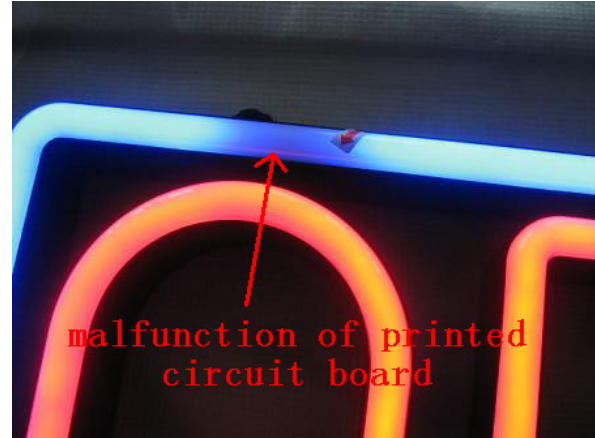
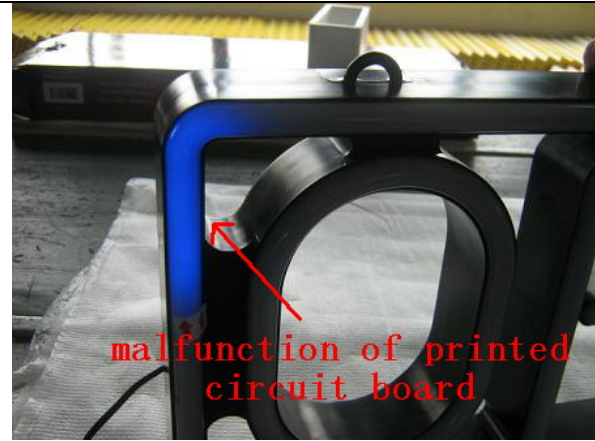





C. Function


Function/Normal

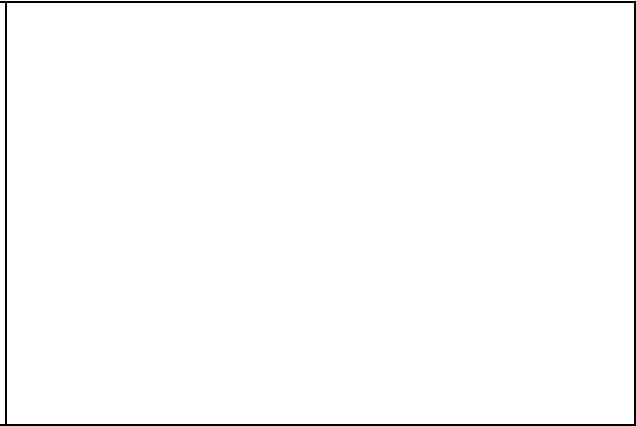


Defective



D. Packing	
Packing/Normal	Defective
  	N/D

E. Shipping Mark	
Shipping Mark/Normal	Defective
	N/D



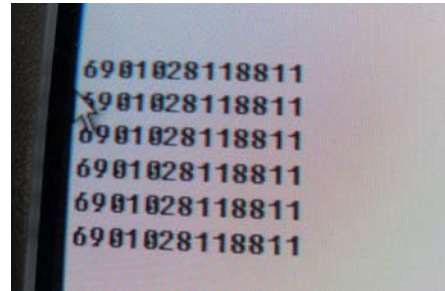
F. Others-Barcode Verification

1. Barcode on the color box

Visual



Reading of bar code scanning



G. Conclusion & Suggestion

Explanations of Defects :

1. **Malfunction of the Printed Circuit Board:** 2pcs with the "critical" defect among the 125pcs checked. The LED light was still on after the power is shut down, it was obviously with a short circuit situation on printed circuit board. Since there is a hazardous concern so we define it as a "critical" defect. According to standard, shipment has to be rejected with any "critical" defect.
2. **Loose assembly of white polycarbonate tube on ABS plastic board:** 3pcs with the major defect among 125pcs checked.
3. **Minor defects like injection mold marks (3pcs) and scratches on the white polycarbonate tube (3pcs)** were found among 125pcs we checked.

Suggestion:

1. We strongly doubt that there is design or manufacturing problem on printed circuit board. THIS IS A CRITICAL PROBLEM. Factory has to review both design and manufacturing process and find out actual reason before reworking the production.
2. Factory need to review and fix assembly process so not to repeat loose assembly problem.